

Technical specification

- LOC is designed primarily for synthetic oils, vegetable oils and mineral oil type HL/HLP in accordance with DIN 51524. Maximum oil temperature 100 °C.
- Maximum negative pressure in the inlet line is 0.4 bar with an oil-filled pump. Maximum pressure on the pump's suction side is 0.5 bar.
- Maximum working pressure for the pump is 10 bar. For information about suction height, pressure, etc. see the QPM3 pump manual.

Heat transfer tolerance $\pm 6 \%$

3-PHASE MOTOR

3-phase asynchronous motors in accordance with IEC 60034-1

Nominal voltage	*
Insulation class	F
Rise of temperature	B
Protection class	IP 55
Recommended ambient temperature	-20 °C - +40 °C

* = See separate instructions for electric motor.

MATERIAL

Pump housing/Cooler matrix	Aluminum
Fan blades/hub	Glass fibre reinforced polypropylene/Aluminum
Fan housing	Steel
Fan guard	Steel
Other parts	Steel
Surface treatment	Electrostatically powder-coated

FX3 FILTER UNIT (option) Aluminum

The filter housing has a built-in bypass valve, pre-set pressure 4.5 ± 0.3 bar.

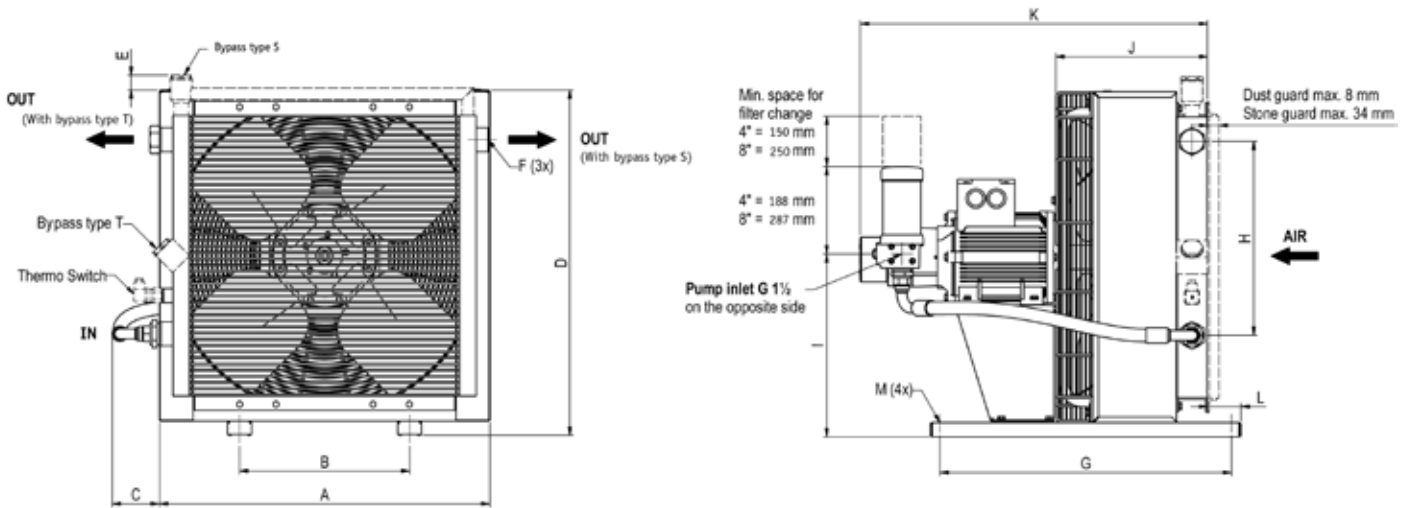
CONTACT OLAER FOR ADVICE ON

- Oil temperatures > 100 °C
- Oil viscosity > 100 cSt
- Aggressive environments
- Ambient air rich in particles
- High-altitude locations

TYPE	Nom. oil flow l/min	Cooling capacity in kW at EDT 40 °C	Cooling capacity kW/°C	Acoustic pressure level LpA dB(A) 1m*	No. of poles/ Capacity kW	Weight kg (approx)
LOC 004 - 4 - D - A	20	2.7	0.07	57	4-0.75	23
LOC2 007 - 4 - D - A	20	5.6	0.14	64	4-0.75	30
LOC2 007 - 4 - D - B	40	7.2	0.18	64	4-0.75	30
LOC2 007 - 4 - D - C	60	8.0	0.20	65	4-1.50	36
LOC2 007 - 4 - D - D	80	8.4	0.21	65	4-1.50	36
LOC2 011 - 4 - D - A	20	9.2	0.23	70	4-0.75	34
LOC2 011 - 4 - D - B	40	10.4	0.26	70	4-0.75	34
LOC2 011 - 6 - D - C	40	7.6	0.19	61	6-1.10	40
LOC2 011 - 6 - D - D	55	8.8	0.22	61	6-1.10	40
LOC2 011 - 4 - D - C	60	12.0	0.30	70	4-1.50	40
LOC2 011 - 4 - D - D	80	13.2	0.33	70	4-1.50	40
LOC2 016 - 4 - D - A	20	11.2	0.28	74	4-1.50	45
LOC2 016 - 4 - D - B	40	15.6	0.39	74	4-1.50	45
LOC2 016 - 6 - D - C	40	12.4	0.31	64	6-1.10	45
LOC2 016 - 6 - D - D	55	14.0	0.35	64	6-1.10	45
LOC2 016 - 4 - D - C	60	18.0	0.45	74	4-1.50	45
LOC2 016 - 4 - D - D	80	19.6	0.49	74	4-1.50	45
LOC2 023 - 4 - D - B	40	21.2	0.53	77	4-1.50	53
LOC2 023 - 6 - D - C	40	16.8	0.42	67	6-1.10	53
LOC2 023 - 6 - D - D	55	18.4	0.46	67	6-1.50	53
LOC2 023 - 4 - D - C	60	24.4	0.61	77	4-2.20	62
LOC2 023 - 4 - D - D	80	26.8	0.67	77	4-2.20	62
LOC 033 - 6 - A - D	55	26.0	0.65	74	6-2.20	92
LOC 033 - 4 - A - C	60	32.0	0.80	85	4-3.00	76
LOC 033 - 4 - A - D	80	34.8	0.87	85	4-3.00	76
LOC 044 - 6 - A - D	55	34.0	0.85	77	6-2.20	98
LOC 044 - 4 - A - C	60	40.0	1.00	86	4-3.00	85
LOC 044 - 4 - A - D	80	44.8	1.12	86	4-3.00	85

* = Electric motors specified are calculated for max. working pressure 6 bar at 125 cSt and 50 Hz, 4 bar at 125 cSt and 60 Hz. If you require higher pressure, please contact us for a choice of motors with a higher output.

** = Noise level tolerance ± 3 dB(A).



TYPE	A	B	C	D	E	F	G	H	I	J	K	L	M ₀
LOC 004 - 4 - D - A	267	134	135	284	73	G1	420	90	164	163	488	58	9
LOC2 007 - 4 - D - A	365	203	105	395	42	G1	510	160	215	225	558	50	9
LOC2 007 - 4 - D - B	365	203	105	395	42	G1	510	160	215	225	571	50	9
LOC2 007 - 4 - D - C	365	203	105	395	42	G1	510	160	215	225	620	50	9
LOC2 007 - 4 - D - D	365	203	105	395	42	G1	510	160	215	225	633	50	9
LOC2 011 - 4 - D - A	440	203	103	470	41	G1	510	230	252	249	582	50	9
LOC2 011 - 4 - D - B	440	203	103	470	41	G1	510	230	252	249	595	50	9
LOC2 011 - 6 - D - C	440	203	103	470	41	G1	510	230	252	249	643	50	9
LOC2 011 - 6 - D - D	440	203	103	470	41	G1	510	230	252	249	657	50	9
LOC2 011 - 4 - D - C	440	203	103	470	41	G1	510	230	252	249	644	50	9
LOC2 011 - 4 - D - D	440	203	103	470	41	G1	510	230	252	249	657	50	9
LOC2 016 - 4 - D - A	496	203	107	526	46	G1	510	230	285	272	640	50	9
LOC2 016 - 4 - D - B	496	203	107	526	46	G1	510	230	285	272	653	50	9
LOC2 016 - 6 - D - C	496	203	107	526	46	G1	510	230	285	272	665	50	9
LOC2 016 - 6 - D - D	496	203	107	526	46	G1	510	230	285	272	678	50	9
LOC2 016 - 4 - D - C	496	203	107	526	46	G1	510	230	285	272	665	50	9
LOC2 016 - 4 - D - D	496	203	107	526	46	G1	510	230	285	272	678	50	9
LOC2 023 - 4 - D - B	580	356	104	610	40	G1	610	305	322	287	668	50	14
LOC2 023 - 6 - D - C	580	356	104	610	40	G1	610	305	322	287	722	50	14
LOC2 023 - 6 - D - D	580	356	104	610	40	G1	610	305	322	287	722	50	14
LOC2 023 - 4 - D - C	580	356	104	610	40	G1	610	305	322	287	709	50	14
LOC2 023 - 4 - D - D	580	356	104	610	40	G1	610	305	322	287	722	50	14
LOC 033 - 6 - A - D	692	356	99	722	32	G1¼	610	406	378	318	754	70	14
LOC 033 - 4 - A - C	692	356	99	722	32	G1¼	610	406	378	318	727	70	14
LOC 033 - 4 - A - D	692	356	99	722	32	G1¼	610	406	378	318	741	70	14
LOC 044 - 6 - A - D	692	356	99	866	49	G1¼	610	584	450	343	779	70	14
LOC 044 - 4 - A - C	692	356	99	866	49	G1¼	610	584	450	343	750	70	14
LOC 044 - 4 - A - D	692	356	99	866	49	G1¼	610	584	450	343	762	70	14

Key for LOC and LOC2 cooling systems

All positions must be filled in when ordering

EXAMPLE:

LOC2 - 011 - 6 - A - C - L - 50 - S20 - D - E0 - 0
 1 2 3 4 5 6 7 8 9 10/11 12

1. TYPE OF COOLING SYSTEM = LOC / LOC2

2. COOLER SIZE

004, 007, 011, 016, 023, 033, 044

3. NUMBER OF POLES, MOTOR

4 - pole = 4
 6 - pole = 6

4. VOLTAGE AND FREQUENCY

Three-phase 220-240/380-420 V 50 Hz* = A
 Three-phase 440-480 V 60 Hz* = B
 Three-phase 220-240/380-420 V 50 Hz 440/480 V 60 Hz** = D
 Three-phase 500 V 50 Hz = E
 Three-phase 400/690 V 50 Hz 440-480 V 60 Hz = F
 Three-phase 525 V 50 Hz = G
 Motor for special voltage (stated in plain language) = X

* = for LC 033 to LOC 044

** = for LOC 004 to LOC 023

5. PUMP SIZE

Displacement 15 cm³/r = A
 Displacement 30 cm³/r = B
 Displacement 45 cm³/r = C
 Displacement 60 cm³/r = D
 Special = X

6. BYPASS VALVE, PUMP

No bypass valve = 0
 Built-in bypass valve, 5 bar internal = L
 Built-in bypass valve, 10 bar internal = H
 Built-in bypass valve, 5 bar external = K
 Built-in bypass valve, 10 bar external = M

7. THERMO CONTACT

For temperature alarm, not for direct control of electric motor.

No thermo contact = 00
 40 °C = 40
 50 °C = 50
 60 °C = 60
 70 °C = 70
 80 °C = 80
 90 °C = 90

8. COOLER MATRIX

Standard = 000
 Two-pass = T00
Built-in, pressure-controlled bypass, single-pass
 2 bar = S20
 5 bar = S50
 8 bar = S80
Built-in, pressure-controlled bypass, two-pass*
 2 bar = T20
 5 bar = T50
 8 bar = T80

Built-in temperature and pressure-controlled bypass, single-pass

50 °C, 2.2 bar = S25
 60 °C, 2.2 bar = S26
 70 °C, 2.2 bar = S27
 90 °C, 2.2 bar = S29

Built-in temperature and pressure-controlled bypass, two-pass*

50 °C, 2.2 bar = T25
 60 °C, 2.2 bar = T26
 70 °C, 2.2 bar = T27
 90 °C, 2.2 bar = T29

* = not valid for LOC 004

9. MATRIX GUARD

No guard = 0
 Stone guard = S
 Dust guard = D
 Dust and stone guard = P

10. FX3 FILTER UNIT (sizing, see page 6)

No filter unit = 0
 Filter unit with 4" element HP = A
 Filter unit with 4" element LP = B
 Filter unit with 8" element HP = E
 Filter unit with 4" element LP = F

11. PRESSURE DROP INDICATOR

No pressure drop indicator. = 0
 Visual pressure drop indicator with manual reset. = D
 Visual pressure drop indicator with thermo guard and manual reset. No signal below 0 °C, signal above +29 °C. = P
 Electric pressure drop indicator with automatic reset. Connection in accordance with DIN 43650 ISO 4400 (Hirschmann) IP 65. = M
 Electric pressure drop indicator with 2-pole AMP contact. = U

12. STANDARD/SPECIAL

Standard = 0
 Special = Z

SPARE PARTS

Part number	Description
58920102	Filter element 04" HP
58920103	Filter element 04" LP
58920302	Filter element 08" HP
58920303	Filter element 08" LP
589310	O-ring for filter housing cover

The information in this brochure is subject to change without prior notice.